

# KENTER JOINING SHACKLE

## TECHNICAL DATA SHEET

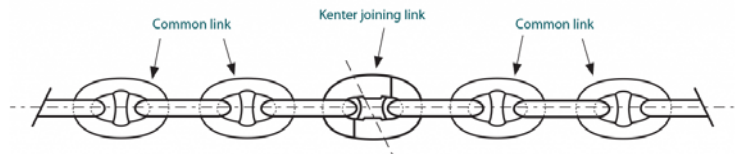
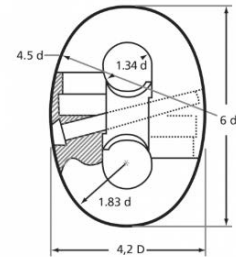
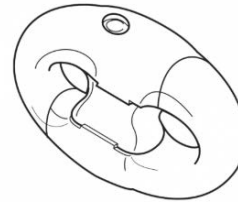
Kenter joining shackles are vital detachable links used to connect Studlink chain segments, or chain to swivel attachments, when permanent welding isn't practical.

Manufactured to classification society requirements and supplied in sizes ranging from 12mm to 50mm in stock, Kenter joining shackles allow accurate matching to existing anchor chain systems. They are designed for safe assembly and disassembly during maintenance when the chain is fully unloaded, providing a practical, non-welded solution for chain replacement and system reconfiguration. Ocean Force is a leading Australian supplier of Kenter Shackles.

Larger sizes and finishes available on request.

### Applications

- **Reliable Joining Link:** For chain-to-chain or chain-to-swivel connections
- **Grades U2 & U3**
- **Class-Approved:** Tested to meet DNV and LR
- **Size Coverage:** 12.5mm–50mm available in store now
- **Interchangeable:** Replaces welded links for maintenance convenience
- **Marine-Grade Finish:** Galvanised or black painted options



### Specifications

Finishes: G - Galvanised B - Black

Product Code	Chain Diameter d (mm)	Proof Load (kN) Grade 2	Breaking Load (kN) Grade 2	Stud Link Chain kg/27.5m
SLK12.5G	12.5	66	92	102
SLK14G	14	82	116	142
SLK16G	16	107	150	175
SLK17.5G	17.5	127	179	197
SLK19G	19	150	211	245
SLK20.5G	20.5	175	244	268
SLK20.5K2G	20.5	175	244	268
SLK22G	22	200	280	324
SLK24B	24	237	332	370
SLK24G	24	237	332	370
SLK26B	26	278	389	431
SLK28B	28	321	449	496
SLK32B	32	417	583	635
SLK36B	36	523	732	800
SLK38B	38	581	812	888
SLK40B	40	640	896	1033
SLK44B	44	769	1080	1197
SLK50B	50	981	1370	1546

Measurements in tables may vary between different models. Ocean Force strives to ensure accuracy but encourages customers to contact us with any questions.