

# CLUMP WEIGHTS

## TECHNICAL DATA SHEET

**Steel clump weights provide compact, snag-resistant holding power for permanent and temporary moorings.**

Ocean Force stocks oval-profile units with a flat base for stable seabed seating and a top shackle boss for fast connection to risers or bridles. Standard weights run 50–250 kg ex-stock with larger masses available on request. The smooth, low-profile shape minimises seabed disturbance and makes diver handling straightforward during placement and inspection. We're a leading marine clump weights supplier Australia, with a range of sizes always in stock.

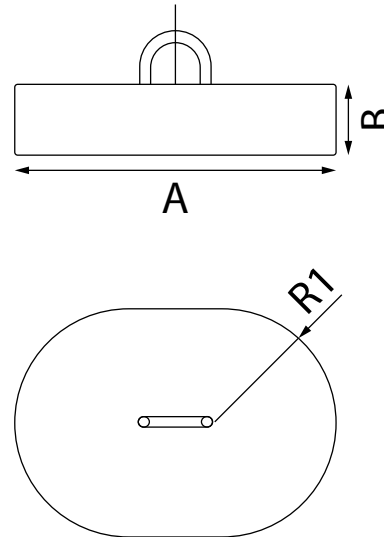
**Nominal Weight:** 50kg-250kg in stock

**Finishing:** Black Paint

Larger sizes available on request.

### Applications

- **Oval, low-drag geometry** with flat base for stable set on sand/mud
- **Integrated shackle connector (top boss)** for quick attachment and retrieval
- **50–250kg** nominal masses held in Cairns, heavier builds available to specification
- **Corrosion-protected steel** construction; black painted
- **Full traceability:** ID tagging, proof-of-mass and certification to client standard



### Specifications

Product Code	Nominal Weight (kg)	Dimensions (mm)		
		A	B	R1
CW050	50	365	80	130
CW100	100	465	100	160
CW250	250	687	110	250

Measurements in tables may vary between different models. Ocean Force strives to ensure accuracy but encourages customers to contact us with any questions.